

2 Hour Fire Rated Sound Barrier Mullion Trim Cap Installation Instructions

- A. Verify that the drywall partition wall is properly constructed and is plumb and square. Do not install Mull-It-Over sound barrier mullion trim caps to partition walls that are not properly constructed.
- B. Clean the mullions and glass adjacent to the vertical mullion where the Mull-It-Over sound barrier mullion trim cap will be applied.
- C. Remove the intumescent foam with 3/4" blanket and steel clips and set aside. Measure and cut aluminum trim cap to proper length using a miter saw with non-ferrous carbide blade, jig saw, or other appropriate cutting tool. Do not use carborundum blades as heat may damage the finished surface of the mullion cap. Do not cut with the compressible gasket against the saw fence. Notch around horizontal mullions, sills or other obstructions leaving appropriate gap for differential movement between the sound barrier mullion trim cap and the obstruction. Place intumescent foam with 3/4" blanket back in place being careful to align slotted holes of the steel clips with the slotted holes of the aluminum trim cap. Cut intumescent foam and 3/4" blanket to match the fitted aluminum trim cap using a utility knife. If any steel clips are located in the areas where the aluminum trim cap is cut or notched, straighten the clip ends, remove and relocate the steel clip by 6" to the nearest slotted hole, push the clip ends through the intumescent foam/blanket and bend clip ends over to secure the intumescent foam/blanket to the steel clip.

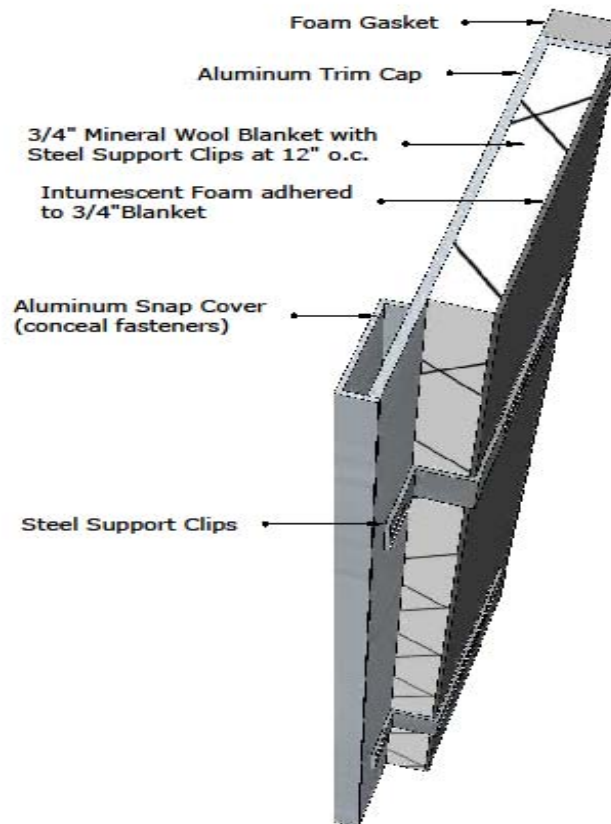
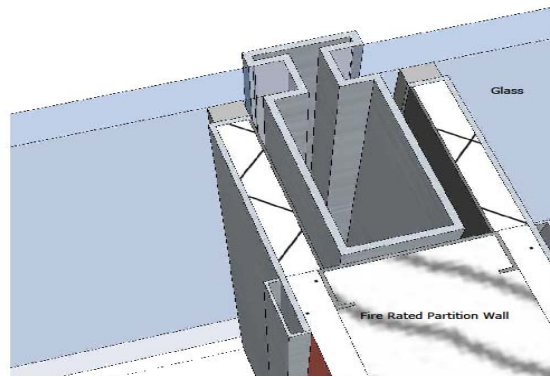


- D. Apply a continuous bead of acoustical sealant between the unexposed 3/4" blanket edge and the vertical drywall edge of the partition wall.

- E. Place the 2 hour sound barrier wall end cap on the vertical surface of the drywall partition wall and loosely install one #8 steel fastener in the top and bottom slotted holes of the wall end cap. The foam gasket will be in contact with the interior glass surface. Plumb the mullion trim cap leaving recommended gap spacing. Tighten top and bottom fasteners to secure end cap and install two #8 steel fasteners through the slotted hole of each steel clip into the end stud at a minimum of 12" on center firmly connecting the mullion trim cap to the partition wall.



- F. Install snap cover to conceal fasteners. Use a rubber mallet or other non-marring tool tapping the edges of the cover to avoid dents or damage to the cover during installation.
- G. Apply color matched sealant at joints between mullion cap and curtain wall mullions, head, sill, or other dissimilar material surfaces. Do not apply sealant between the sound barrier mullion trim cap and glass.
- H. Protect all sound barrier wall end caps from damage during installation, general construction activities and until turnover of the structure.
- I. Sound barrier wall end caps shall be installed in strict accordance with the manufacturer typical details and instructions. Provide appropriate spacing to allow for differential movement as provided by manufacturers of adjacent systems or the structural engineer of record.



Furnished by Installing Contractor

- #8 Steel Fasteners of proper length to secure mullion trim cap to partition wall metal framing at a minimum spacing of two fasteners at 12" on center
- Acoustical Sealant
- Color Matched Sealant (exposed joints)